

# Ex db IIC INSTRUMENT ENCLOSURES AND TERMINAL BOXES



INSTRUMENT ENCLOSURES



TERMINAL BOXES

Instrument and terminal boxes are used to contain instruments, measurement devices and terminals. Suitable to be used in potentially explosive areas zone 1,21 and zone 2,22 these products are available both in copper-free aluminium or SS316L material.

**Combustion and Energy Ex db IIC enclosures are ATEX, IECEx, Tr Cu and INMETRO certified.**

# TERMINAL BOXES


## TECHNICAL SPECIFICATIONS



### MATERIAL

Enclosure material: Copper free Aluminium or stainless steel SS316L

### Ex CODE

Ex marking:  II 2 GD  
Ex db IIC T6 ... T4 Gb  
Ex tb IIIC T85°C ... T135°C Db

### MECHANICAL FEATURES

Degree of protection: IP66  
Temperature: -50°C to +85°C  
Threaded holes: ISO Metric / ANSI B1.20.1 NPT

### ELECTRICAL FEATURES

Max. rated voltage: 690 VAC / VDC  
Max. rated impulse voltage: 8 kV (max. 10 sec.)  
Frequency: 50 / 60 Hz  
Maximum rated current: 109 A  
Max. rated cross section: 35 sqmm

### Ex FEATURES

Standards: EN 60079-0 / EN 60079-1 / EN 60079-31  
IEC 60079-0 / IEC 60079-1 / IEC 60079-31  
Suitable for: Zone 1 / Zone 2 / Zone 21 / Zone 22

### CERTIFICATES

Certificates Number:  FTZÚ 15 ATEX 0182X  
FTZÚ 15.0035X  
 TRcU certificate available upon request  
 INMETRO certificate available upon request

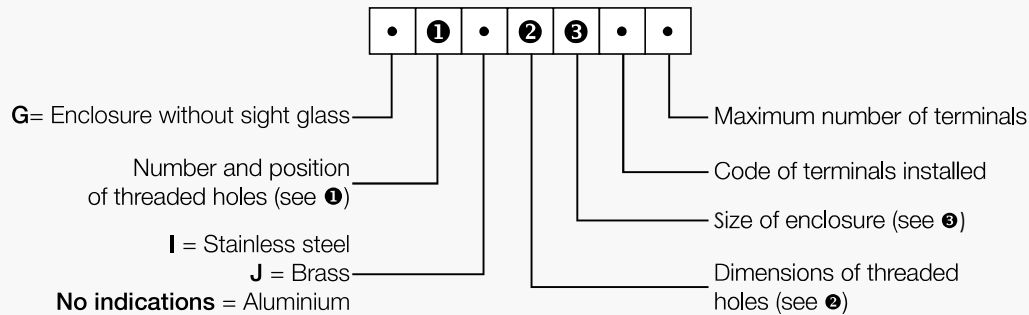
### NOTE

Certificate for Group I available.

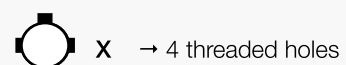
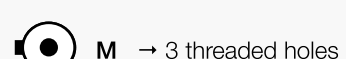
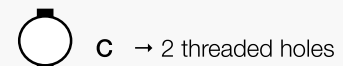
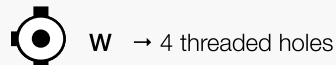
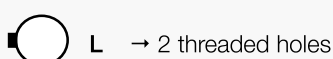
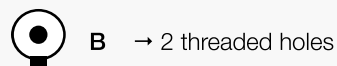
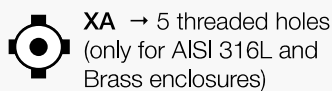
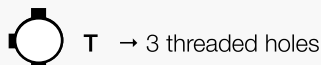
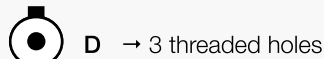
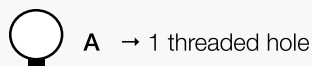
# TERMINAL BOXES

## TECHNICAL SPECIFICATIONS

### TYPE DESIGNATION OF INSTRUMENT ENCLOSURES



❶ Number and position of threaded holes (for Stainless steel and brass instrument enclosures):



❷ Dimensions of threaded holes:

1= 1/2" NPT

2= 3/4" NPT

3= 1" NPT

4= 1.1/4" NPT

5= 1.1/2" NPT

6= 2" NPT

20= M20x1.5

25= M25x1.5

32= M32x1.5

40= M40x1.5

50= M50x1.5

63= M63x1.5

**K** = Mixed

In case of entries having different threading and/or dimensions on the same enclosure, the marking will include the letter "K" and the layout of the threaded holes will be attached to the operating and maintenance manual.

❸ Size of the enclosures (all dimensions  $\pm$  3 mm):

#### AISI 316L and Brass Enclosures

4 =  $\varnothing$  71 mm;

6 =  $\varnothing$  90 mm;

6A =  $\varnothing$  90 mm;

7 =  $\varnothing$  112 mm;

8 =  $\varnothing$  131 mm ;

9 =  $\varnothing$  146 mm

#### Aluminium Enclosures

4 =  $\varnothing$  71mm;

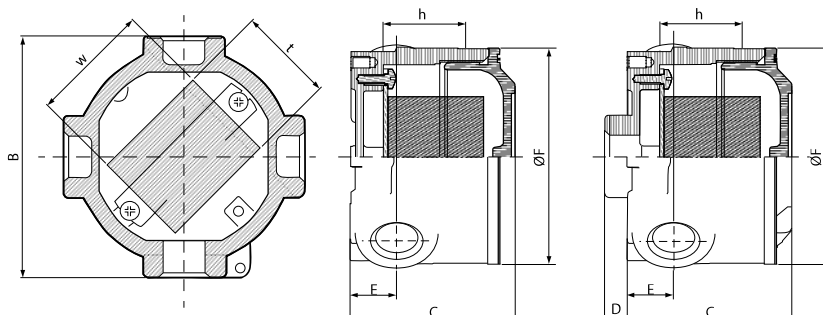
6 =  $\varnothing$  90 mm;

6A =  $\varnothing$  90 mm;

8 =  $\varnothing$  130 mm;

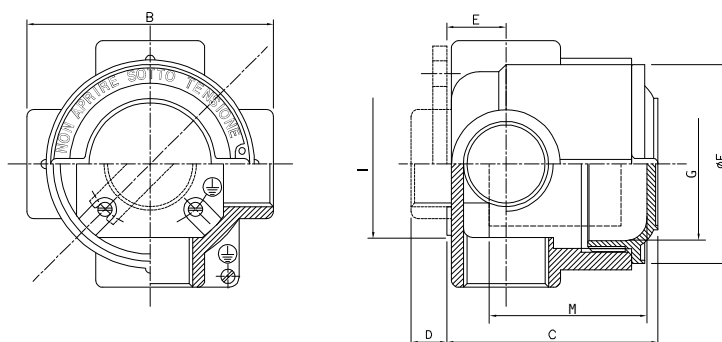
9 =  $\varnothing$  145 mm ;

# AISI 316L AND ALUMINIUM TERMINAL BOXES DRAWINGS AND DIMENSIONS



AISI 316L TERMINAL BOXES - WITHOUT WINDOW AND WITHOUT EXTENSION

Size	External dimensions (mm)					Max. dimensions terminal strip (mm)			Max. volume terminals strip (dm <sup>3</sup> )
	B	C	D	E	ØF	h	w	t	
4	80	69	9	20	71	40	30	28	0,033
6	100	68	9,5	22,5	90	40	50	35	0,070
6A	100	73	9,5	22,5	90	45	50	35	0,078
7	126	82	11	24	112	50	65	45	0,146
8	145	99	9,5	27	131	65	70	60	0,273
9	161	115	9,5	27	146	75	85	65	0,414



ALUMINIUM TERMINAL BOXES - WITHOUT WINDOW AND WITHOUT EXTENSION

Size	External dimensions (mm)					Max. dimensions apparatus (mm)		
	B	C	D	E	ØF	M	I	G
4	80	77	9	20	70	49	51	51
6	100	78	8	20	90	49	70	70
6A	100	86	8	23	90	57	70	70
8	138	113	14	32	130	80	98	103
9	150	126	14	36	145	90	112	118

Dimensions and weights are approximate and subject to change without notice.